



CLASS 300 STAINLESS STEEL GATE VALVE

Fig# GT 300SSF10

Applicable Standards:

Steel Gate valves, API 603

Steel Gate valves, ASME B16.34

Face to Face, ASME B16.10

End Flange, ASME B16.5

Inspection and Test, API 598

Design:

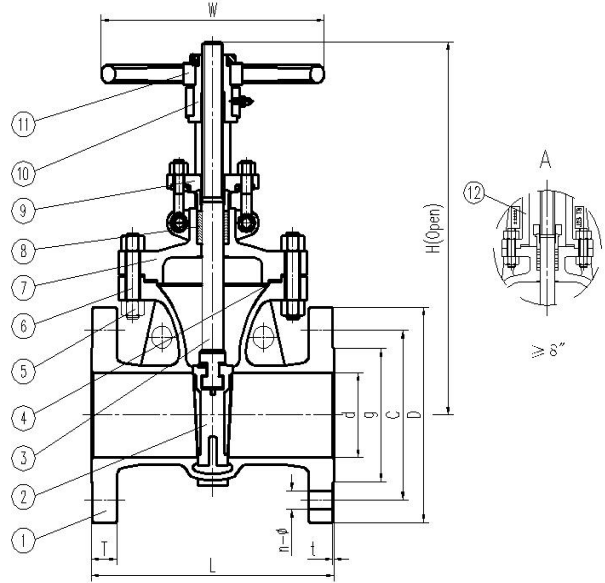
OS&Y, Outside Screw and Yoke

Flexible Wedge

Forged T-head Stem

Rising stem and Non-rising handwheel

Valve MFG in Accordance with NACE MR0175 Specifications



NO	PART NAME	MATERIAL
1	Body	A351-CF8M
2	Disc	A351-CF8M
3	Stem	A276-316
4	Gasket	PTFE/316+PTFE
5	Nut	A194-8M
6	Bonnet Bolt	A193-B8M

NO	PART NAME	MATERIAL
7	Bonnet	A351-CF8M
8	Packing	PTFE
9	Gland Flange	A351-CF8
10	Stem Nut	A439-D2
11	Handwheel	A395-65-45-15
12	Yoke	A351-CF8

NPS	Typical Dimensions(in)				Class 300Lb Flange Dimensions(in)							WT Lbs
	d	L	H	W	D	C	g	T	t	n	Φ	
1/2	1/2	5.5	8.31	3.94	3.75	2.62	1.38	0.56	0.06	4	5/8	9.46
3/4	3/4	6	8.31	3.94	4.62	3.25	1.69	0.62	0.06	4	3/4	11
1	1	6.5	10.16	5.43	4.88	3.5	2	0.68	0.06	4	3/4	17.38
1.1/2	1.1/2	7.5	11.93	7.87	6.12	4.5	2.88	0.81	0.06	4	7/8	28.6
2	2	8.5	13.31	7.87	6.5	5	3.62	0.87	0.06	8	3/4	36.52
2.1/2	2.1/2	9.5	16.1	8.82	7.5	5.88	4.12	1	0.06	8	7/8	60.5
3	3	11.12	18.7	8.82	8.25	6.62	5	1.12	0.06	8	7/8	87.56
4	4	12	21.73	11.81	10	7.88	6.19	1.25	0.06	8	7/8	132
5	5	15	26.38	11.81	11	9.25	7.31	1.37	0.06	8	7/8	224.4
6	6	15.88	30.16	13.78	12.5	10.62	8.5	1.44	0.06	12	7/8	237.6
8	8	16.5	38.9	15.75	15	13	10.62	1.62	0.06	12	1	424.6
10	10	18	44.33	17.72	17.5	15.25	12.75	1.87	0.06	16	1.1/8	644.6
12	12	19.75	56.85	19.69	20.5	17.75	15	2	0.06	16	1.1/4	935
14	14	30	62.28	21.65	23	20.25	16.25	2.12	0.06	20	1.1/4	1498
16	16	33	67.91	23.62	25.5	22.5	18.5	2.25	0.06	20	1.3/8	1949
18	18	36	60.39	24.02	28	24.75	21	2.37	0.06	24	1.3/8	2376
20	20	39	86.38	24.02	30.5	27	23	2.5	0.06	24	1.3/8	2970
24	24	45	102.28	24.02	36	32	27.25	2.75	0.06	24	1.5/8	5940